

RESIDENCE 83B

ROOMS

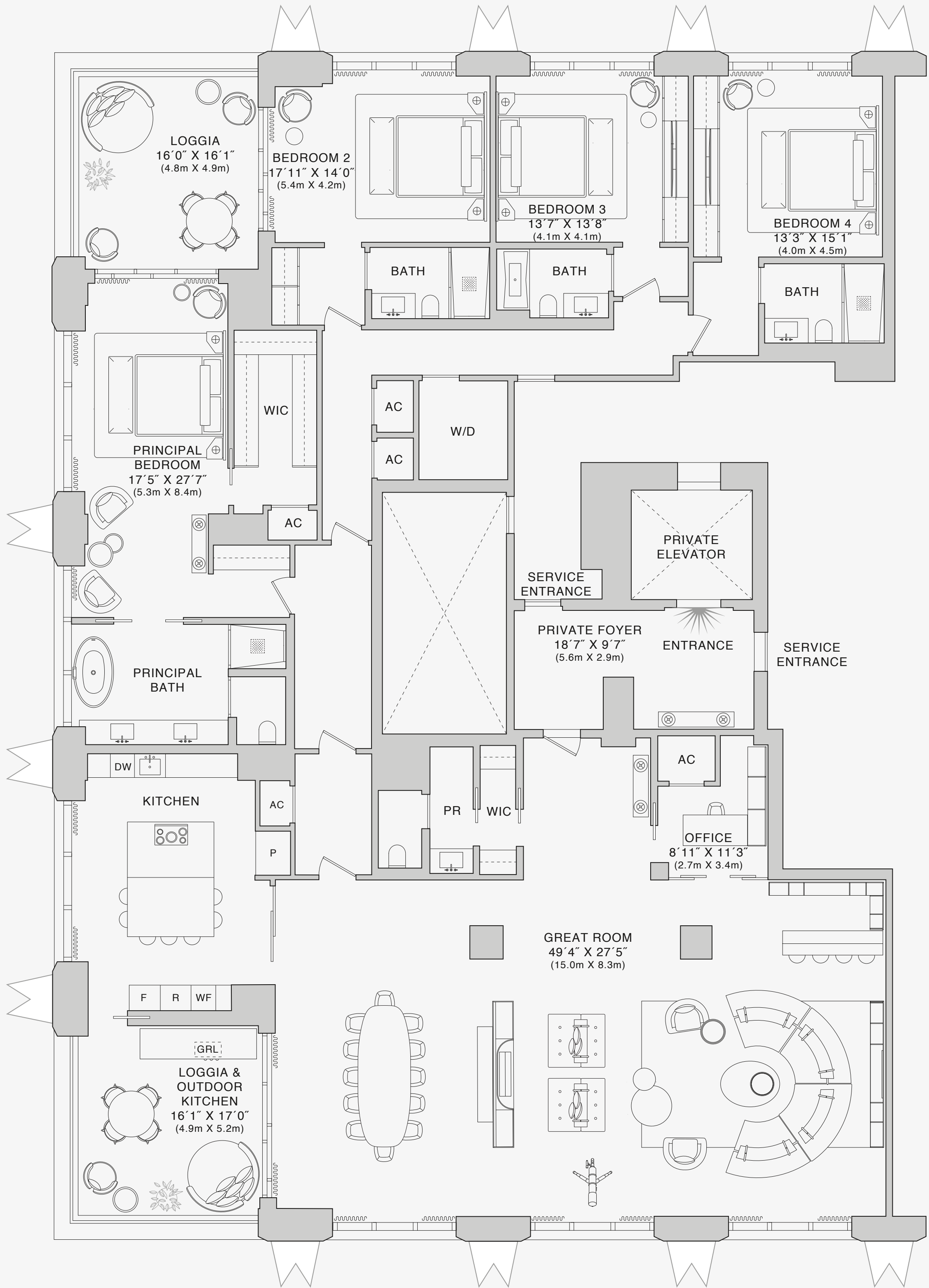
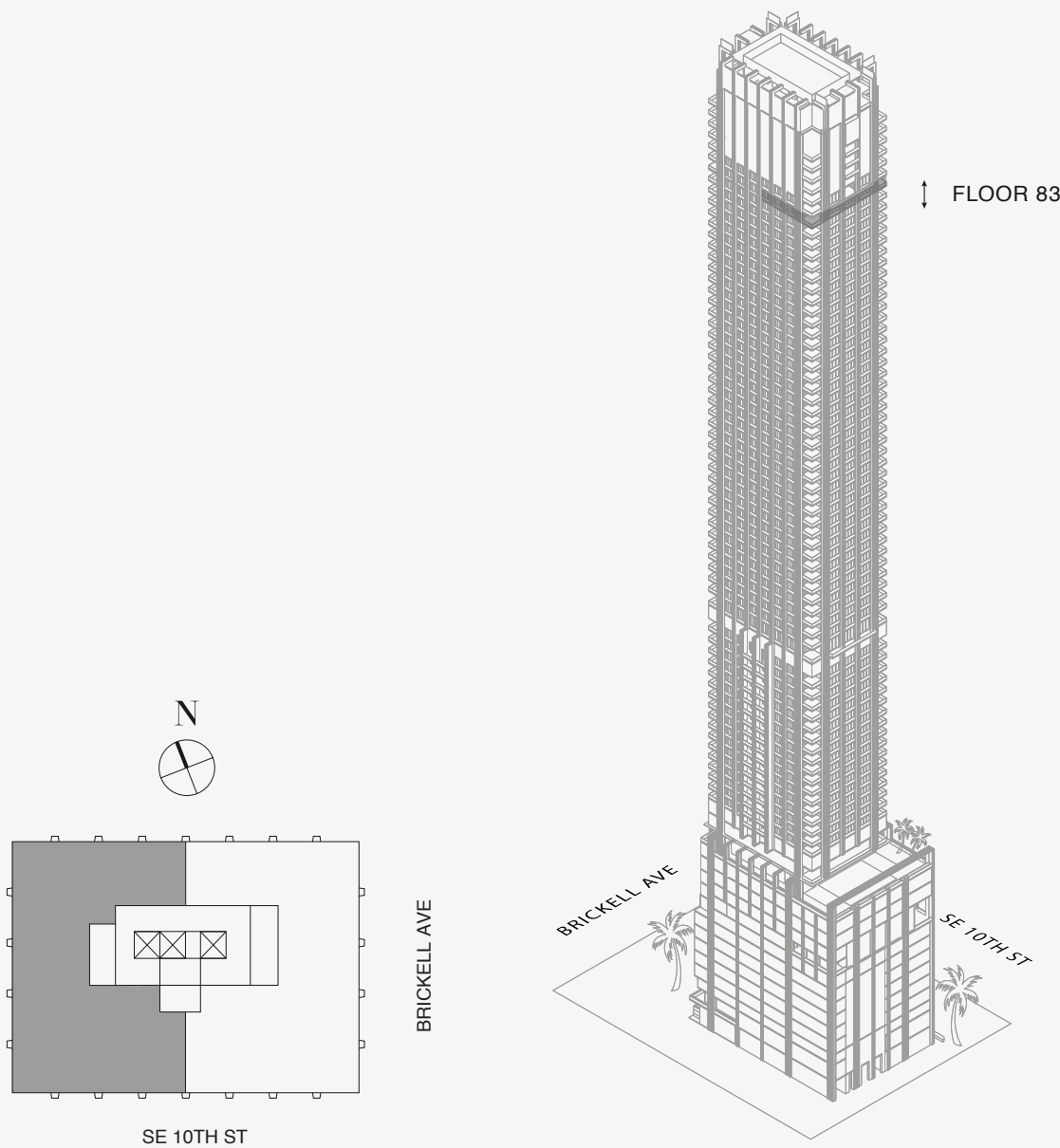
- 4 Bedrooms
- 4 Bathrooms
- Powder Room
- Study

SQUARE FOOTAGES (SQUARE METERS)

- Indoor: 4,962 SQF (461 SM)
- Outdoor: 572 SQF (53 SM)
- Total: 5,534 SQF (514 SM)

FEATURES

- 888 Suite & 888 Room
- Ceiling Height up to 11’
- Loggia & Outdoor Kitchen
- South - East Views



Biscayne Bay

Stated dimensions are measured to the exterior boundaries of the exterior walls and the centerline of interior demising walls and in fact vary from the dimensions that would be determined by using the description and definition of the "Unit" set forth in the Declaration (which generally only includes the interior airspace between the perimeter walls and excludes interior structural components). For your reference, the area of the Unit, determined in accordance with those defined unit boundaries, is set forth on Exhibit "3" to the Declaration of Condominium. Note that measurements of rooms set forth on this floor plan are generally taken at the greatest points of each given room (as if the room were a perfect rectangle), without regard for any cutouts. Accordingly, the area of the actual room will typically be smaller than the product obtained by multiplying the stated length times width. All dimensions are approximate and may vary with actual construction, and all floor plans and development plans are subject to change. The Condominium is not owned, developed or sold by Dolce & Gabbana S.r.l or any of its affiliates (the "Brand"). Developer uses Dolce & Gabbana marks pursuant to a license agreement with the Brand, terminable according to its terms. The Brand assumes no responsibility or liability in connection with the project, and makes no representation or warranty in respect thereof.